

Door Saver II Commercial Hinge Pin Stop

Model: DD02-48

SKU # 022-1519

Features

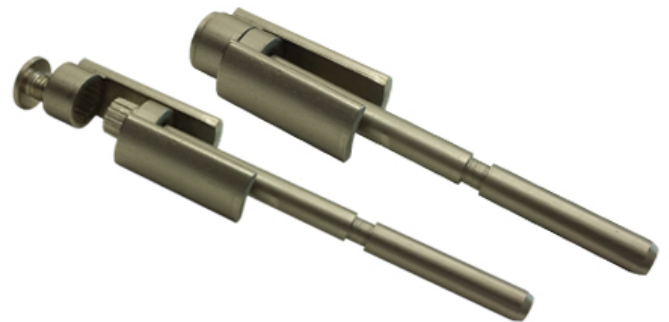
- Material: Carbon Steel
- Bumperless Design Eliminate Damage between Door and Trim
- Installs in Second, No Tools Required
- Hinge Mounted, Suitable for Commercial Application
- Overall Size: 4-3/4" x 1"



Available Finish

- Satin Nickel-C15
- Oil Rubbed Bronze-10B
- Polished Chrome-C26
- Matte Black

(Other Finishes Available with Lead-Time)



4-7/8"

